



COMMUNITY FORESTRY MANAGEMENT PLAN

CITY OF NORTH WILDWOOD
CAPE MAY COUNTY, NJ

2016-2020



PREPARED FOR: THE CITY OF NORTH WILDWOOD
901 ATLANTIC AVENUE
NORTH WILDWOOD, NJ 08260

PREPARED BY: THE LOMAX CONSULTING GROUP, LLC
PO BOX 9, 1435 ROUTE 9 NORTH
CAPE MAY COURT HOUSE, NJ 08210

TABLE OF CONTENTS

Community Forestry Management Plan

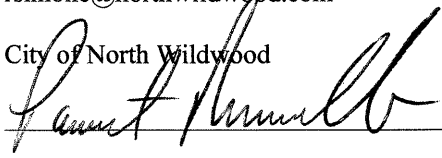
<u>SECTION</u>	<u>PAGE</u>
1. MUNICIPAL / COUNTY INFORMATION FORM.....	1
2. INTRODUCTION.....	2
A. BACKGROUND.....	2
B. MISSION STATEMENT.....	3
C. GOALS AND OBJECTIVES.....	3
D. LIABILITY STATEMENT	7
3. COMMUNITY OVERVIEW – PAST, PRESENT AND FUTURE.....	8
A. INTRODUCTION.....	8
B. ENVIRONMENTAL CONTEXT.....	8
C. HISTORY	9
D. CULTURE.....	10
E. COMMUNITY VALUES.....	11
4. COMMUNITY FORESTRY PROGRAM ADMINISTRATION.....	13
CITY OF NORTH WILDWOOD ORGANIZATIONAL CHART.....	15
5. COMMUNITY MAP.....	16
6. TRAINING PLAN.....	17
7. PUBLIC EDUCATION, AWARENESS AND OUTREACH.....	18
8. STATEMENT OF TREE BUDGET.....	20
9. STATEMENT OF PLAN IMPLEMENTATION.....	21
A. BACKGROUND.....	21
B. YEARLY IMPLEMENTATION TIMELINE.....	21
C. SUMMARY.....	27
10.COMMUNITY STEWARDSHIP INCENTIVE PROGRAM.....	29
11.SELECTED REFERENCES.....	38

APPENDICES

- A. Figures
 - Figure 1: City of North Wildwood USGS Topographic Map
 - Figure 2: City of North Wildwood Aerial with Land Cover Overlay
- B. “City of North Wildwood - Forestry Base Map with Preliminary Street Tree Inventory and Naturally Vegetated Areas Overlay, Community Forestry Management Plan”, prepared by The Lomax Consulting Group, dated 12/17/15

Community Forestry Management Plan

1. Municipal/County Information Form (*Attachment A*)

Municipality: City of North Wildwood
County: Cape May County
Address: 901 Atlantic Avenue, North Wildwood, NJ 08260
Contact Name and Title: Ron Simone, Administrative Assistant
Phone #: (609) 522-2030 ext 1260
Email: rsimone@northwildwood.com
Organization Name: City of North Wildwood
Mayor's Signature: 
Date of Management Plan Submission: May 2, 2016
Time Period Covered In Management Plan: 2016 - 2020

Community Stewardship Incentive Program (CSIP)
Practices Identified in Management Plan

- ☐ CSIP #1 Training
- ☐ CSIP #2 Community Forestry Ordinance Establishment
- ☐ CSIP #3 Public Education and Awareness
- ☐ CSIP #4 Arbor Day
- ☐ CSIP #5 Tree Inventory
- ☐ CSIP #6 Hazard Tree Assessment
- ☐ CSIP #7 Storm Damage Assessment
- ☐ CSIP #8 Tree Maintenance and Removals
- ☐ CSIP #9 Insect and Disease Management
- ☐ CSIP #10 Wildfire Protection
- ☐ CSIP #11 Tree Planting
- ☐ CSIP #12 Tree Recycling
- ☐ CSIP #13 Sidewalk Maintenance Program
- ☐ CSIP #14 Storm Water Management
- ☐ CSIP #15 Other

Official Use Only Certification

The above named municipality has made formal application to the New Jersey Forest Service. I am pleased to advise you that after our review, the N.J. Forest Service has concluded that this plan meets the standards set forth by the State and the N.J. Community Forestry Council and is approved for the period covered.

Signed:

State Forester:

Approved Date:

2. INTRODUCTION

A. Background

The Community Forestry Management Plan (CFMP or Plan) for the City of North Wildwood was prepared to establish programs that recognize the unique nature of its tree resources and to plan future programs that will continue to protect and enhance these resources. The City received a Green Communities Grant to assist in funding and development of the CFMP as presented herein. This Grant was authorized by the State on March 23, 2015 for a 24-month term expiring on March 22, 2017; however the Grant was not signed by the State until October 26, 2015.

The City established goals and objectives compatible with its forestry planning process vision to provide forest and tree streetscapes for the benefit of its residents and visitors in addition to the wildlife that rely on tree resources. The Plan presented herein recognizes the accomplishments of the City and its partners in furthering community forestry endeavors. More recently, the Community Forestry Working Group was formed to support in the preparation of the CFMP. The Community Forestry Working Group, along with the Buildings, Parks and Grounds Department will serve to implement the CFMP.

The Plan recognizes that the City, a barrier island, seashore resort community, experiences a unique set of opportunities and challenges. As a generally built-out, urbanized community, the City of North Wildwood contains no vast stands of trees or defined “woodlands.” In addition, the City leadership and administration, supported and advised by Community Forestry Working Group, are committed to the maintenance and enhancement of its natural resources, as well as maintained streetscapes.

The principal challenge faced by the City revolves around the resort nature of the community, with a relatively small year-round population, but large summer population. Trees are an asset that requires year-round care, an effort that, at times, exceeds the resources of this small community. Further, the overall environment of the City ranges from moderate to severe at times. The droughty, sandy soil of the coastal plain has low water and nutrient holding capacity. The geography of the City, including proximity to the both the Atlantic Ocean, Grassy Sound and Hereford Inlet, exposes the tree resources to harsh growing conditions. Prolonged exposure of flooding during coastal storms and frequent salt spray common to barrier island communities create stressors on the community forest resources. Further, the damaging winds associated with these storms present unique sets of management protocols. These challenges

require a carefully studied approach to the management of the City's tree resources.

Notwithstanding these concerns, the City expresses, through this Plan, its intention to protect and enhance the tree resources, including streetscapes, while at the same time engaging in efforts to avoid accidents caused by these resources, thereby obtaining liability protection for damage and/or injury caused by trees.

B. Mission Statement

The mission of the City's CFMP is to protect, enhance and sustain productive community shade tree and forest resources that will improve the quality of life for the residents, visitors and wildlife that inhabit and/or visit this unique resort community.

The approach to fulfill this mission entails engaging the community through education and outreach programs while concurrently enlisting support and guidance from the Mayor and City Council, Department of Public Works and their community forestry and landscape consultants. This community effort will ensure that the overarching values expressed by the community include appropriate management and improvement of the open space, active recreational areas and the streetscapes of the residential and commercial districts. While enhancing the tree resources, the City is committed to promoting the safety and welfare of its citizens by inventorying the extent and condition of its trees and by maintaining them, while still recognizing the limits of its resources.

C. Goals and Objectives

GOAL 1

Review and adopt the CFMP

Objectives:

1. Review the City organizational structure for management of tree/forest resources.
2. Prepare the draft CFMP with input from the City, Community Forestry Working Group, Building, Parks and Grounds Department, Public Works Department and Planning Board and cross reference with the City's Public Lands Vegetation Management Plan.
3. Present the draft CFMP to the City and the public.
4. Review and revise the CFMP to facilitate appropriate portions of the City Ordinances consistent with the adopted CFMP.
5. Provide training to the Community Forestry Working Group and Building, Parks and Grounds Department staff, concerning the scope and provisions of the CFMP to facilitate

implementation.

6. Review and adopt the Public Lands Vegetation Management Plan such that consistency is sought between it and the CFMP. Train appropriate personnel in implementation of both plans.
7. Implement the Public Lands Vegetation Management Plan, principally tree-related practices, initially through Pilot Project(s).
8. Revise the City Ordinances to incorporate the provision of the Public Lands Vegetation Management Plan and CFMP, as appropriate.

GOAL 2

Inventory and Assessment of the Community Forest Resources within the City

Objectives:

- A. Establish a base map of the City for inventorying existing trees and tracking landscape/streetscape improvements on public property.
- B. Develop a tree inventory database system for routinely evaluating tree health and maintenance activities.
- C. Conduct a preliminary inventory of the naturally occurring forest areas and active recreational park and streetscape tree resources on public property within the City.
- D. Prepare an inventory of trees on public property that may be hazardous and/or storm-distressed, and prepare a list of these priority trees requiring maintenance by the Building, Parks and Grounds Department and/or Public Works Department.
- E. Inventory the invasive trees threatening the integrity of the natural areas within the City.

GOAL 3

Develop a Plan for Tree Resource Enhancement within the City

Objectives:

- A. Identify areas within the City streetscapes that could benefit from the planting of selected tree species.
- B. Identify areas within the City parks and properties that could be enhanced by the planting of selected tree species.
- C. Develop lists of tree species and other vegetation suitable for planting in the City's streetscapes in order to minimize water requirements and minimize insect and disease damage, while sustaining pollinators and appropriate wildlife and enhancing the aesthetics of the City, including viewsheds.
- D. Develop standards and procedures for streetscape tree planting and maintenance.

- E. Continue removing and mitigating hazard trees through the use of the City's existing Building, Parks and Grounds Department. Update hazard tree inventory.
- F. Replace hazard tree removals in parks, where feasible, by planting trees in suitable locations. Develop a tree planting plan for plantings in other suitable areas as well.

GOAL 4

Develop Outreach Initiatives that Encourage Public Awareness and Support of Community Forestry Programs.

Objectives:

- A. Develop information with the assistance of the Mayor, City Council and Administration, as well as Public Information Officer, Community Forestry Working Group, Building, Parks and Grounds Department and Public Works Department staff for dissemination to the public concerning the value of trees in the City, existing tree resource protections (i.e., ordinances/guidance documents/CFMP/Public Lands Vegetation Management Plan) and appropriate notification procedures for reporting violations.
- B. Identify City resources available for the dissemination of information to the public.
- C. Incorporate Community Forestry messages in community communications (e.g. website and newsletters), City resources, public relations news releases and events. Consult with the Public Information Officer to develop an inventory and schedule of outreach communications and events, including Arbor Day, and engaging speakers and authors who present programs on tree-related topics.
- D. Host an Arbor Day event in the City (in cooperation with other City stakeholders).
- E. Work with appropriate City departments and professionals to incorporate elements of this Plan into City of North Wildwood's Master Plan.
- F. Apply for "Tree City USA" designation to help support tourism, eco-tourism and public goodwill.
- G. Put an insert in all tax bills and sewer bills instructing residents how to report problem trees.
- H. Establish a link from the City's web site for addressing tree care issues.

GOAL 5

Develop a Plan for Sustaining Forestry Resources in the City

Objectives:

- A. Develop a process with the Mayor and the Council for allocation of City resources to obtain funding from within the City, as well as from other sources, to implement the CFMP.
- B. Coordinate with the City Planning Board to incorporate elements of the CFMP and Public Lands Vegetation Management Plan into the next Master Plan Re-examination.

- C. Protective mulch devices to be installed around all vulnerable trees in City parks and along the beach/bike paths by the end of the five-year period.
- D. Develop a budget for the next year's program and seek supplementary funding sources.
- E. Prepare and submit the Annual Report to the NJDEP Community Forestry Program.

GOAL 6

Provide Educational Opportunities in Support of the CFMP.

Objectives:

- A. Expand the number of City personnel and volunteers who have attended CORE and advanced training required by the Community Forestry Act.
- B. Develop information guiding the use of suitable trees and shrubs to be used in the community to minimize water requirements and to minimize insect and disease damage while sustaining pollinators and appropriate wildlife.
- C. Develop a school enrichment program, in connection with the City School Board and the Community Forestry Working Group, Building and Parks and Grounds Department, which provides insight and experiences associated with the value of trees, forested habitats in the community and Arbor Day activities.
- D. Develop an interpretive (educational) trail using the existing access path to the beach and dune system. Establish stations on the path that correspond to an educational brochure.

GOAL 7

Develop a natural tree destruction response plan addressing tree damage

Objectives:

- A. Identify risks to the community trees and the associated potential for damage resulting from tree failure on City property. Best practices as described in the Public Lands Vegetation management Plan shall be followed.
- B. Develop a plan, in consultation with City emergency management personnel, to respond to tree damage episodes. This plan will include the required City personnel and equipment, public safety protocols and outline the clean-up and disposal of tree debris. Building, Parks and Grounds Department and Public Works Department, personnel will be trained to treat tree damage episodes safely.
- C. Expand City tree inventory database to include i-Tree Storm functionality consistent with USDA Forest Service standards and protocols.

D. Liability Statement

Although street and public open space trees are an asset to the community, it is inevitable that they mature and require care, maintenance and eventually replacement. Care and maintenance, in addition to planting "the right tree in the right place," can help insure that community trees not only contribute to the aesthetic, environmental and economic vitality of the area, but also reduce the potential hazards to public safety. The community must work within a reasonable budget that may not be able to meet each and every need of our community forest immediately. Therefore, it is the intent of this Plan to focus available resources to the greatest need and work step-by-step towards healthy trees in streetscapes and public open spaces with commensurate reduced risk to public safety.

The City feels by taking logical steps outlined in the CFMP, in concert with the provisions and recommendations of the Public Lands Vegetation Management Plan, that the City will garner public support for Plan implementation and demonstrate the long-term benefits to the environment and public safety.

The City also wants to become more pro-active in the management and care of its trees through this CFMP, as well as its public lands through a companion document, the Public Lands Vegetation Management Plan. Through inventory and hazard assessment, the City will position the Community Forestry Working Group to coordinate with the Building, Parks and Grounds Department to take corrective action prior to structural tree failure and other hazardous tree-related conditions. It is acknowledged that not all hazardous conditions can be predicted. Good maintenance and care will reduce the probability, but unexpected events may still occur.

Following this Plan and its supporting natural resource management guidelines will demonstrate that the City is devoting reasonable levels of resources in a planned manner to mitigate the number of tree-related incidents/accidents, thereby reducing its exposure to liabilities and increasing public safety.

3. Community Overview - Past, Present and Future...

A. Introduction

The City initiated the development of this Plan, as well as the Public Lands Vegetation Management Plan, as part of community-wide planning initiatives to address streetscape and gateway design, address public safety and concerns, inform landscaping standards and engage in proactive stewardship of its natural resources. In anticipation of the formation of the Community Forestry Working Group, the City engaged in the preliminary stages of the Plan development to reflect its long term objectives. After formation of the group, its members convened to outline and identify goals and objectives specific to the needs of the community. The City is committed to its long-standing history of planting and maintaining street trees, and doing so in a manner that account for the growing conditions and surrounding environment. In recent years, the City has re-examined its streetscapes and public lands natural areas and has recognized the need for maintenance, care and management of these resources. This Plan is prepared to address the mission and goals for tree resource management and to define objectives and an organizational structure to support this effort in anticipation of future coastal storm impacts. The City continues its interest in tree resources by planting trees and shrubs around new public buildings and by supporting the forestry/landscaping efforts of community partners. Likewise, the City's Public Lands Vegetation Management Plan provides clear, goals and objectives, as well as implementations standards and recommendations, for the stewardship of vegetation resources beyond just trees.

B. Environmental Context

The City of North Wildwood is located in the outer coastal plain region along the northern extent of the Wildwoods and along Cape May County's Atlantic Ocean coastline. It is bordered to the north by Hereford Inlet, the estuarine tidal marshes of Grassy Sound to the west and to the east by the Atlantic Ocean. Located to the north is the Borough of Stone Harbor. It is bordered to the south by the City of Wildwood. The municipality encompasses approximately 2.135 square miles of which 1.753 square miles is land area and 0.382 square miles is comprised of water, as illustrated in **FIGURE 1 (APPENDIX A)**.

In order to place this CFMP in a meaningful context, it is noteworthy that the Atlantic Ocean coastline (eastern portion of the City) and the back bays (western portion of the City) are separated by just over a ½-mile wide land mass, which results in very limited opportunities for

natural forested areas. These maritime features strongly influence the region, including climatic conditions, as well as the tidal nature of these waterbodies and their relative salinities influence the growing conditions of the surrounding lands. Soils in this region are comprised of sands, low in nutrient values, higher in salt concentrations and excessively drained. Accordingly, the associated low fertility and high water table limits the scope and scale of forest resources that can survive in this dynamic coastal zone. The majority of tree/forest resources are located within the streetscapes or rights-of-way, small parks throughout the City, and along the margins of the back bay coastal marshes and beachfront dune systems.

The Land Cover Map of the City illustrates the distribution of urban (developed) areas and open space/natural areas (**FIGURE 2 – APPENDIX A**). The majority of the land area is classified as urban land cover. The limited forest resources within the City are contained within three types of ecological communities (underlined below). These areas represent portions of the City suitable for application of the CFMP. The Coastal Marsh Margins (northern and western limits of the City), the Dune Complex (northern and eastern limits of the City), and the Streetscapes and Community Parks (within the core of the City) provide the greatest opportunities for tree management and enhancement. These areas will require routine tree inspection and maintenance. Opportunities exist along the City's public properties for programmatic tree enhancement; however, these areas are also limited due to existing development patterns. Additional considerations account for vegetation management adjacent to privately owned lands in order to minimize damaging and/or invasive species, as well as insect and disease damage, while sustaining pollinators and appropriate wildlife and enhancing the aesthetics of the City, including viewsheds.

C. History

The lands now known as the City of North Wildwood originally incorporated as the Borough of Anglesea on June 13, 1885 from portions of Middle Township based on the results of a referendum on June 2, 1885. The Borough was reincorporated on March 6, 1896 and again on May 4, 1897. On May 16, 1906, the Borough of North Wildwood formally was incorporated and replaced Anglesea Borough. On April 30, 1917, North Wildwood was again reincorporated, this time as City of North Wildwood. The municipality is organized under a City-form of municipal government by an elected Mayor and a Council consisting of six elected members.

Early inhabitants of the Five Mile Beach, of which North Wildwood makes up the northern extent, were Native Americans from the Ketchemeche Tribe, or Lenni Lenape. Later, colonial

pioneers from the mainland began to utilize Five Mile Beach, crossing the wetlands or accessing the island by boat for the seasonal grazing of livestock. As fishing became a more prominent way of life in the late 1800s, the first permanent residents on Five Mile Beach, erected fishing shacks at the north end of the island near the Hereford Inlet Lighthouse and naming their settlement Angelsea. In 1874, the Federal government built a lighthouse at Hereford Inlet around which a fishing village soon formed. In 1879 further land development was spurred by Fredrick Swope, an entrepreneur with ties to the railroad, who purchased lands from Humphrey Cresse, and formed the Angelsea Improvement Company. In 1884, the West Jersey Railroad constructed a line servicing Anglesea from the mainland. By 1902, a bridge was constructed capable of vehicular traffic, opening further development investment and expansion on the island. As recognition spread of the seashore and its lifestyle, more residents and visitors focused their attention on Five Mile Beach. Shortly thereafter, Wildwood's boardwalk was constructed as a means of pedestrian access along the waterfront.

The resiliency of North Wildwood has been repeatedly tested by coastal storms since its development, including a 1926 storm that decimated the boardwalk. While fire, storm-damage and exposure have continued to place the boardwalk at risk, it remains a prominent and essential feature of the community. Although the boardwalk does not extend along the entirety of the City's beach front, North Wildwood has planned and implemented at grade recreational features including a bike path, play areas and service amenities to enhance its waterfront. An extensive dune complex buffers these improvements from the ocean and provides for a natural area with a mix of vegetation and habitats, which require stewardship and periodic maintenance.

In addition to beachfront economic redevelopment, the City has focused on revitalization of the downtown core for shopping and entertainment. Included with these beautification and economic enhancements are event spaces, landscaped features and parks. The community has prioritized quality of life considerations for residents and visitors alike, bolstered by a keen sense of place and a renewed focus on community trees, streetscapes and management of public lands.

D. Culture

The culture of the community revolves largely around its seashore amenities, namely the beachfront and bayside areas, but also includes traditional festivities in the downtown core. The majority of properties are utilized for seasonal vacation homes; consequently, from Memorial

Day to Labor Day, the population increases dramatically. During the summer tourist season the population changes from 5,325 year-round residents to over 72,993 residents and visitors. As of the census of 2010, there were 5,325 people, 2,512 households and 1,085 families residing in the City. Further, North Wildwood has a broad base of community involvement rooted in civic, service and beautification efforts and an extensive calendar of events. Community partners and civic groups coordinate with the City on programming, events and special projects/

E. Community Values

Public policy and its associated planning documents reflect the values of this community. Accordingly, the City's Master Plan, dated August 12, 2010, emphasizes that lands "not utilized by buildings or paved surfaces shall be landscaped, utilizing combinations such as the planting of conifers and/or deciduous trees native to the area in order to either maintain or reestablish the tone of the vegetation in the area and lessen the visual impact of the structures and paved areas." The City's interest in community beautification is to pursue neighborhood enhancements, the plantings of trees and improvements to community parks. "In order to strike a balance between the desire to increase open space while not being overly-restrictive as to the wants and needs of private property owners, explore potential incentives to encourage private property owners to develop habitat gardens and rain gardens and to plant trees and other landscaping elements that are indigenous to the island."

Section 11 of the City's Master Plan Re-Examination provides for documentation of recreation and open space inventory parcels. The current inventory of preserved open space in North Wildwood is 372 acres. Significant portions of the inventory include protected natural lands, specifically the beach and wetland areas. Also included in preserved open space are public parks and playgrounds. The City believes that these open spaces enhance the quality of life by providing the beauty of nature and recreational opportunities in and around the City's urbanized setting.

The City has a long-standing history of dune engineering, a practice which yielded valuable protections during Superstorm Sandy. Continued efforts remain fully engaged to advance essential oceanfront management projects as part of post-Superstorm Sandy coastal resiliency planning. Very limited tree growth presently exists along the beachfront, although conceptual plans have been prepared by State and federal officials for a fortified dune system to be augmented with native vegetation. This dune system is anticipated to provide an enhanced protective barrier during coastal storms. As such, the City has historically had close ties to the

natural resources of the community and embraces efforts to maintain, enhance and protect its natural resources and community assets. The balanced environmental ethic and values of the City are illustrated by the Mayor's and Council's support of the work by the Community Forestry Working Group and community partners.

Tree resources of the City were preliminarily inventoried during the summer of 2015 for purposes of identifying the preliminary distribution of street trees and natural areas on the newly established Forestry Base Maps for the municipality (**APPENDIX B**). Commonly occurring trees planted in the streetscapes and parks of the community include Bradford pear (*Pyrus calleryana*), honey locust (*Gleditsia triacanthos*), American holly (*Ilex opaca*), sycamore (*Platanus occidentalis*), red maple (*Acer rubrum*), eastern red cedar (*Juniperus virginiana*), crapemyrtle (*Lagerstroemia indica*) and Japanese black pine (*Pinus thunbergiana*). Dominant tree species within the naturalized landscapes of the community include honey locust (*Gleditsia triacanthos*), American holly (*Ilex opaca*), sycamore (*Platanus occidentalis*), Japanese black pine (*Pinus thunbergiana*), eastern red cedar (*Juniperus virginiana*), persimmon (*Diospyros virginiana*), and black cherry (*Prunus serotina*). Japanese black pine (*Pinus thunbergiana*) is an invasive species that are ubiquitous throughout the City, both in natural and planted landscapes.

While the existing City planning documents, including the Public Lands Vegetation Management Plan, provide objectives for natural resource protection and management, this CFMP will bring a pointed focus to the tree resources of the City. Subsequent to the approval of this Plan, it is anticipated that Plan will be integrated into relevant sections of City Ordinances as they are created, modified and updated in the future.

4. Community Forestry Program Administration

Two principal groups within the City are committed to overseeing the management of the municipal tree resources, as illustrated in the Organizational Chart. The Community Forestry Working Group is responsible for the tree inventory, assessment, planning and education, while the North Wildwood Buildings, Parks and Grounds Department is responsible for the maintenance and care of municipal trees. Any maintenance requests beyond the capability or expertise of the Buildings, Parks and Grounds Department are contracted to professional landscapers or certified tree experts on an “as needed” basis. Community outreach for issues pertaining to tree resources, events, activities and City initiatives is coordinated through the Public Information Office.

The membership of the current North Wildwood Community Forestry Working Group includes:

Mayor Patrick Rosenello

Council President Sal Zampirri, Sr.

Doug Ford, Superintendent of Buildings, Parks and Grounds Department

Gary Sloan, Superintendent of Public Works Department

Jerry Zdenek, Buildings Parks and Grounds Department

Ronald Simone, Administrative Assistant

The staff of the North Wildwood Building, Parks and Grounds Department and/or Public Works Department is fully integrated into community forestry activities with Ronald Simone serving as the Primary Point of Contact.

City of North Wildwood
Department of Administration
901 Atlantic Avenue
North Wildwood, NJ 08260
(609) 522-2030 ext 1260

The continuity and flow of the City administration and organization is imperative to the success of the community tree resources. The City Organizational Chart is presented on the following page. The Mayor and Council receive input from the City Administrator, Community Forestry Working Group, Building, Parks and Grounds Department, Public Works Department, Planning Board, Code Enforcement and the public. This input provides a vision for the future of the community.

As part of this planning effort, working relationships are forged with various departments and community groups within the City, each performing its individual duties to ensure a healthy, sustainable population of trees.

Requests for municipal tree services are addressed through one of two processes: (1) City tree service and maintenance requests or (2) new plantings on City properties. The Buildings, Parks and Grounds Department ultimately carries out the maintenance and service requests on City property and may use outside contractors, as appropriate. New plantings typically follow the protocol illustrated on the Organizational Chart to ensure that the new plantings are consistent with the vision of the City and to ensure that adequate comment has been provided by the City Administrator, Community Forestry Working Group, Building, Parks and Grounds Department, Public Works Department, Planning Board, Code Enforcement and the public. After a consensus has been reached by the advisory groups, the City Administrator implements the tree management and planting through the Building, Parks and Grounds Department, Public Works Department or contracted professionals, as appropriate. Tree-related activities conducted by the Building, Parks and Grounds Department, Public Works Department or contracted professionals include: installation of trees, supervision of landscape contractors, storm clean-up response, brush and leaf removal/disposal, hazard tree response/removal, supervision of utility/tree conflict issues/solutions, parks/facilities/grounds maintenance and improvements.

New plantings within the City on private properties are presently unregulated. Given the aforementioned planning limitations, namely small parcel sizes, widths of rights-of-way, yard space for landscaping is quite limited. Accordingly, the ordinances have not been set forth to regulate the selection/placement/removal of trees on private property.

Additionally, no person or entity (with the exception of public utilities and City contractors for limited activities) shall engage in landscaping practices of any kind on public land. Any vegetation management on public lands shall conform to the protocols and approved practices of the City's Public Lands Vegetation Management Plan.



5. Community Map

The CFMP Base Map, titled, “City of North Wildwood - Forestry Base Map with Preliminary Street Tree Inventory and Naturally Vegetated Areas Overlay, Community Forestry Management Plan”, prepared by The Lomax Consulting Group, dated December 17, 2015 is presented in **APPENDIX B**. This base map details the municipality and locates the City’s forest-related resources. The base map is provided as a 2010 color aerial at a scale of 1” = 500’ such that important community forest features can be clearly identified. The base maps clearly labels the City streets and roadways for reference when considering potential sites for prescribed activities. Additionally, this base map contains important tree resource information as part of this initial forestry assessment of the City. Natural Forest Areas are preliminarily delineated and streetscapes with a significant density of street tree plantings are depicted.

A preliminary inventory of tree resources within the City indicates that higher densities of street trees are located along Central Avenue and residential neighborhoods east of Central Avenue. Street tree distribution west of Central Avenue is more sporadic and sparse. Additionally, street tree plantings were typically concentrated in areas with a presence of public facilities, including parks. Natural areas with tree resources are fairly limited within the City; the greatest concentrations are located along the beach/dune system, coastal marsh fringe, within public parks and along the rights-of-way and transportation interchanges entering/exiting the island associated with N.J. Route 147 (North Wildwood Boulevard).

6. Training Plan

CORE employee training serves as the basis for implementing the CFMP. The State recommends that at least one employee of the municipality and one volunteer receive this training. In addition, The Lomax Consulting Group has obtained CORE and relevant advanced training for multiple employees to assist the City in development and implementation of its CFMP. The City will secure CORE training for two individuals, one from the Department of Buildings, Parks and Grounds and another from the Community Forestry Working Group in 2016. Further, the City is dedicated to expanding the number of trained staff and diversity of training programs as part of the CFMP as outlined in the Goals section of this Plan. The City intends to allocate funds in its Tree Budget to accomplish this training.

The training proposed by the City includes the following:

1. Expanding the number of City staff and volunteers that are CORE trained and participation in skills training through Continuing Education Programs. The objective is to increase the number of trained staff and volunteers while increasing the depth of knowledge and experience of this working group.
2. Training shall be focused on the Community Forestry Working Group and Building, Parks and Grounds Department regarding their roles and responsibilities, understanding the CFMP and City policies/practices relating to tree resources management.
3. Training the Building, Parks and Grounds Department staff and the Community Forestry Working Group members to identify and report tree hazards, in addition to the process through which the problems are resolved.
4. Training of the Building, Parks and Grounds Department staff in advanced tree pruning techniques.

7. Public Education/Awareness/Outreach

The City is engaged in tree and vegetation resource management through its Mayor, City Council and Administration, as well as Public Information Office, Community Forestry Working Group, Building, Parks and Grounds Department and affiliated community organizations. Community outreach for issues pertaining to tree resources, events, activities and City initiatives is coordinated through the Public Information Office. The venues through which the community anticipates conducting public outreach and education are listed below.

Programs

- *Educational Information at Community Facilities*
- *Commemorative Tree Planting and Bench Programs*
- *Educational Booths at Community Events*
- *Cooperative Programming with the School System*

Media Communications

- *News Releases*
- *City Facebook Page*
- *City Twitter Feed*
- *City Website*

Outreach to Groups

- *City Web News Portal*
- *Constituent Services Database*
- *City Mailings (insert within tax and/or utility invoices)*
- *Community Organizations*

Through the use of existing resources, the Community Forestry Working Group will develop a network of distribution outlets for dissemination of important information specific to the value of trees, forestry-related programs and events, existing tree resource protections (e.g., guidance documents, CFMP), as well as procedures for reporting violations. The North Wildwood school system was also identified as another important channel for distribution of information to the public. Other community partners anticipated to assist in the outreach of the Community Forestry Working Group include the Business Improvement District, school and service clubs. It is anticipated that the CFMP will be posted to the City's website for easy access and reference by the public.

The school is anticipated to host annual Arbor Day activities, which provides outreach opportunities to engage the public in community forestry efforts and communicate the City's efforts to protect and enhance its tree resources. Additionally, as part of this Plan, the Community Forestry Working Group has set as an objective, the formalization of a Commemorative Tree program. Through this program, an opportunity will be created for citizens and groups to honor and remember individuals through the enhancement of public lands and streetscapes with tree plantings.

The aforementioned community partners, outlets, events and City website will serve to carry the mission and message of the Community Forestry Working Group and the CFMP. Media communication opportunities through the issuance of new releases, social media posts and mailings will also be utilized to promote events and programs in support of tree resource enhancement and management.

8. Statement of Tree Budget

The City is distinct from many municipalities in that its tree programs need special training and experience to enhance and protect its tree resources because of the coastal environmental conditions. In order for the City to act as steward of the landscape, the allocation of resources is important. The 2016 Tree Budget includes City plantings and public funds associated with this project.

CITY ESTIMATED TREE BUDGET 2016

Department of Parks Personnel Salaries/Wages	\$18,504.00
Education and Training Tree-cutting & chainsaw safety	\$250.00
Tree Planting Plants and Materials	\$6,414.00
Tree Maintenance Materials	\$400.00
Equipment Rental	n/a
Community Forestry Working Group Volunteer Time (12 hours @ \$21.79/hour)	\$261.00
Partner Organization(s) Volunteer Time (8 hours @ \$21.79/hour)	\$174.00
Contractor and Consultant Fees (CFMP Preparation)	\$3,200.00

TOTAL \$29,203.00

9. Statement of Plan Implementation

The following Statement of Plan Implementation addresses the specific actions proposed to carry out the City CFMP's goals and objectives, as identified in Section 2, and establishes a yearly Implementation Timeline.

A. Background

The CFMP addresses tree-related opportunities and considerations within the City, while concurrently coordinating the actions within the City, of its volunteers and interested state and federal agencies. The Plan has been approved by the City, after receiving public input, and the implementation strategy is presented below along with the timeline for each action.

B. Yearly Implementation Timeline

The following yearly implementation timeline defines the planned actions (Tasks) to achieve the goals and objectives discussed in Section 2 (pages 3 to 6).

Year 1, 2016

1. Review the City organizational structure for management of tree/forest resources.
2. Prepare the draft CFMP with input from the City, Community Forestry Working Group, Building, Parks and Grounds Department, Public Works Department and Planning Board and cross reference with the City's Public Lands Vegetation Management Plan.
3. Present the draft CFMP to the City and the public for adoption.
4. Review and adopt the Public Lands Vegetation Management Plan such that consistency is sought between it and the CFMP. Train appropriate personnel in implementation of both plans.
5. Establish a base map of the City for inventorying existing trees and tracking landscape/streetscape improvements on public property.
6. Conduct a preliminary inventory of the naturally occurring forest areas and active recreational park and streetscape tree resources on public property within the City.
7. Develop lists of tree species and other vegetation suitable for planting in the City's streetscapes in order to minimize water requirements and minimize insect and disease damage, while sustaining pollinators and appropriate wildlife and enhancing the aesthetics of the City, including viewsheds.
8. Identify City resources available for the dissemination of information to the public.
9. Host an Arbor Day event in the City (in cooperation with other City stakeholders).
10. Develop a process with the Mayor and the Council for allocation of City resources to obtain

- funding from within the City, as well as from other sources, to implement the CFMP.
11. Develop information guiding the use of suitable trees and shrubs to be used in the community to minimize water requirements and to minimize insect and disease damage while sustaining pollinators and appropriate wildlife.
 12. Identify risks to the community trees and the associated potential for damage resulting from tree failure on City property. Best practices as described in the Public Lands Vegetation management Plan shall be followed.
 13. Obtain CORE training for a City staff person and volunteer, as required by the Community Forestry Act.
 14. Provide training to the Community Forestry Working Group and Building, Parks and Grounds Department staff, concerning the scope and provisions of the CFMP to facilitate implementation.
 15. Implement the Public Lands Vegetation Management Plan, principally tree-related practices, initially through Pilot Project(s).
 16. Develop a budget for the next year's program and seek supplementary funding sources.
 17. Prepare and submit the Annual Report to the NJDEP Community Forestry Program.

Year 2, 2017

1. Continue to implement the Public Lands Vegetation Management Plan, principally tree-related practices, initially through Pilot Project(s).
2. Revise the City Ordinances to incorporate the provision of the Public Lands Vegetation Management Plan and CFMP, as appropriate.
3. Develop a tree inventory database system for routinely evaluating tree health and maintenance activities.
4. Prepare an inventory of trees on public property that may be hazardous and/or storm-distressed, and prepare a list of these priority trees requiring maintenance by the Building, Parks and Grounds Department and/or Public Works Department.
5. Inventory the invasive trees threatening the integrity of the natural areas within the City.
6. Identify areas within the City streetscapes that could benefit from the planting of selected tree species.
7. Identify areas within the City parks and properties that could be enhanced by the planting of selected tree species.
8. Develop standards and procedures for streetscape tree planting and maintenance.
9. Remove and mitigate hazard trees through the use of the City's existing Building, Parks and Grounds Department. Update hazard tree inventory.

10. Replace hazard tree removals in parks, where feasible, by planting trees in suitable locations. Develop a tree planting plan for plantings in other suitable areas as well.
11. Develop information with the assistance of the Mayor, City Council and Administration, as well as Public Information Officer, Community Forestry Working Group, Building, Parks and Grounds Department and Public Works Department staff for dissemination to the public concerning the value of trees in the City, existing tree resource protections (i.e., ordinances/guidance documents/CFMP/Public Lands Vegetation Management Plan) and appropriate notification procedures for reporting violations.
12. Identify City resources available for the dissemination of information to the public.
13. Incorporate Community Forestry messages in community communications (e.g. website and newsletters), City resources, public relations news releases and events. Consult with the Public Information Officer to develop an inventory and schedule of outreach communications and events, including Arbor Day, and engaging speakers and authors who present programs on tree-related topics.
14. Host an Arbor Day event in the City (in cooperation with other City stakeholders).
15. Apply for "Tree City USA" designation to help support tourism, eco-tourism and public goodwill.
16. Put an insert in all tax bills and sewer bills instructing residents how to report problem trees.
17. Establish a link from the City's web site for addressing tree care issues.
18. Protective mulch devices to be installed around all vulnerable trees in City parks and along the beach/bike paths by the end of the five-year period.
19. Expand the number of City personnel and volunteers who have attended CORE and/or advanced training required by the Community Forestry Act.
20. Develop a budget for the next year's program and seek supplementary funding sources.
21. Prepare and submit the Annual Report to the NJDEP Community Forestry Program.

Year 3, 2018

1. Continue to implement the Public Lands Vegetation Management Plan, principally tree-related practices, initially through Pilot Project(s).
2. Update the base map of the City for inventorying existing trees and tracking landscape/streetscape improvements on public property.
3. Maintain a tree inventory database system for routinely evaluating tree health and maintenance activities, including invasive trees threatening the integrity of the natural areas within the City.
4. Continue to identify areas within the City streetscapes that could benefit from the planting

- of selected tree species.
5. Continue to identify areas within the City parks and properties that could be enhanced by the planting of selected tree species.
 6. Continue removing and mitigating hazard trees through the use of the City's existing Building, Parks and Grounds Department. Update hazard tree inventory.
 7. Continue to replace hazard tree removals in parks, where feasible, by planting trees in suitable locations.
 8. Incorporate Community Forestry messages in community communications (e.g. website and newsletters), City resources, public relations news releases and events. Consult with the Public Information Officer to develop an inventory and schedule of outreach communications and events, including Arbor Day, and engaging speakers and authors who present programs on tree-related topics.
 9. Host an Arbor Day event in the City (in cooperation with other City stakeholders).
 10. Put an insert in all tax bills and sewer bills instructing residents how to report problem trees.
 11. Protective mulch devices to be installed around all vulnerable trees in City parks and along the beach/bike paths by the end of the five-year period.
 12. Expand the number of City personnel and volunteers who have attended CORE and/or advanced training required by the Community Forestry Act.
 13. Develop a school enrichment program, in connection with the City School Board and the Community Forestry Working Group, Building and Parks and Grounds Department, which provides insight and experiences associated with the value of trees, forested habitats in the community and Arbor Day activities
 14. Develop a budget for the next year's program and seek supplementary funding sources.
 15. Prepare and submit the Annual Report to the NJDEP Community Forestry Program.

Year 4, 2019

1. Continue to implement the Public Lands Vegetation Management Plan, principally tree-related practices, initially through Pilot Project(s).
2. Update the base map of the City for inventorying existing trees and tracking landscape/streetscape improvements on public property.
3. Maintain a tree inventory database system for routinely evaluating tree health and maintenance activities, including invasive trees threatening the integrity of the natural areas within the City.
4. Continue to identify areas within the City streetscapes that could benefit from the planting of selected tree species.

5. Continue to identify areas within the City parks and properties that could be enhanced by the planting of selected tree species.
6. Continue removing and mitigating hazard trees through the use of the City's existing Building, Parks and Grounds Department. Update hazard tree inventory.
7. Continue to replace hazard tree removals in parks, where feasible, by planting trees in suitable locations.
8. Incorporate Community Forestry messages in community communications (e.g. website and newsletters), City resources, public relations news releases and events. Consult with the Public Information Officer to develop an inventory and schedule of outreach communications and events, including Arbor Day, and engaging speakers and authors who present programs on tree-related topics.
9. Host an Arbor Day event in the City (in cooperation with other City stakeholders).
10. Work with appropriate City departments and professionals to incorporate elements of this Plan into City of North Wildwood's Master Plan.
11. Put an insert in all tax bills and sewer bills instructing residents how to report problem trees.
12. Coordinate with the City Planning Board to incorporate elements of the CFMP and Public Lands Vegetation Management Plan into the next Master Plan Re-examination.
13. Protective mulch devices to be installed around all vulnerable trees in City parks and along the beach/bike paths by the end of the five-year period.
14. Expand the number of City personnel and volunteers who have attended CORE and/or advanced training required by the Community Forestry Act.
15. Continue the school enrichment program, in connection with the City School Board and the Community Forestry Working Group, Building and Parks and Grounds Department, which provides insight and experiences associated with the value of trees, forested habitats in the community and Arbor Day activities
16. Develop an interpretive (educational) trail using the existing access path to the beach and dune system. Establish stations on the path that correspond to an educational brochure.
17. Develop a budget for the next year's program and seek supplementary funding sources.
18. Prepare and submit the Annual Report to the NJDEP Community Forestry Program.

Year 5, 2020

1. Continue to implement the Public Lands Vegetation Management Plan, principally tree-related practices, initially through Pilot Project(s).
2. Revise the City Ordinances to incorporate the provision of the Public Lands Vegetation Management Plan and CFMP, as appropriate.

3. Update the base map of the City for inventorying existing trees and tracking landscape/streetscape improvements on public property.
4. Maintain a tree inventory database system for routinely evaluating tree health and maintenance activities.
5. Continue to identify areas within the City streetscapes that could benefit from the planting of selected tree species.
6. Continue to identify areas within the City parks and properties that could be enhanced by the planting of selected tree species.
7. Continue removing and mitigating hazard trees through the use of the City's existing Building, Parks and Grounds Department. Update hazard tree inventory.
8. Continue to replace hazard tree removals in parks, where feasible, by planting trees in suitable locations. Develop a tree planting plan for plantings in other suitable areas as well.
9. Incorporate Community Forestry messages in community communications (e.g. website and newsletters), City resources, public relations news releases and events. Consult with the Public Information Officer to develop an inventory and schedule of outreach communications and events, including Arbor Day, and engaging speakers and authors who present programs on tree-related topics.
10. Host an Arbor Day event in the City (in cooperation with other City stakeholders).
11. Put an insert in all tax bills and sewer bills instructing residents how to report problem trees.
12. Protective mulch devices to be installed around all vulnerable trees in City parks and along the beach/bike paths by the end of the five-year period.
13. Expand the number of City personnel and volunteers who have attended CORE and/or advanced training required by the Community Forestry Act.
14. Continue the school enrichment program, in connection with the City School Board and the Community Forestry Working Group, Building and Parks and Grounds Department, which provides insight and experiences associated with the value of trees, forested habitats in the community and Arbor Day activities
15. Develop an interpretive (educational) trail using the existing access path to the beach and dune system. Establish stations on the path that correspond to an educational brochure.
16. Develop a plan, in consultation with City emergency management personnel, to respond to tree damage episodes. This plan will include the required City personnel and equipment, public safety protocols and outline the clean-up and disposal of tree debris. Building, Parks and Grounds Department and Public Works Department, personnel will be trained to treat tree damage episodes safely.

17. Expand City tree inventory database to include i-Tree Storm functionality consistent with USDA Forest Service standards and protocols.
18. Develop a budget for the next year's program and seek supplementary funding sources.
19. Prepare and submit the Annual Report to the NJDEP Community Forestry Program.

C. Summary

1. A Tree Inventory and Assessment has been initiated in the form of a preliminary survey of the distribution of trees within the City. This survey provides a general location of street trees and natural forest areas. The presence of invasive tree species was noted as part of evaluations completed for the Public Lands Vegetation Management Plan. Additionally, the survey established the preliminary location of street tree plantings of a significant density. These densities correspond to locations along the central commercial district of the City, as well as along streets with a presence of public facilities. This information is useful in tailoring future programs and planting efforts in the City. It is expected that throughout the term of this Plan, Years 1-5 will include an on-going inventory and updated assessment of locations within the City, including streetscapes, public parks and natural areas that require forestry management and/or enhancement. During Year 2 the initial tree inventory database will be established and tested.

2. As part of the initial tree resource survey, attention was paid to Hazard Tree Identification and Management. The presence of invasive species within municipal parks and natural areas was noted. The local dominance of these species was evident in several locations within the City, which serves as an initial objective to specifically document these areas and formulate a plan to address the potential for hazard trees associated with this growth. Additionally, the preliminary survey of trees in the City indicated that there are hazard trees within the streetscapes that will need to be specifically identified and addressed in the near term. Dead and dying trees and tree growth into utility lines occurrences will need to be catalogued and reported. It is expected that throughout the term of this Plan, Years 1-5 will identify and monitor tree species within the City that need to be addressed. During Year 2 the initial tree inventory database will be established and tested. Additionally, Year 2 will include an inventory of hazard trees and a prioritization for maintenance and/or removal. The complete tree hazard identification will be completed during Years 3, 4 and 5. Continued training of City staff and volunteers during all five years of the Plan is intended to increase awareness and improve reporting of hazard trees.

3. Tree Planting efforts are anticipated to focus on priority areas identified as part of the Tree

Inventory and Assessment, Hazard Tree Identification and Invasive Species Replacement efforts identified above. Enhancement of streetscapes and planting of appropriate trees and shrubs in public open spaces, as well as on private property, will be accomplished through a number of programs and outreach efforts. Initially, in Year 1, the City will develop a list of tree species and other vegetation suitable for use in the diverse and challenging growing conditions of this barrier island. The foundation component of the Plan is the development of events that will support tree planting and enhancement. Annual releases of public information will be organized in Years 3-5 to facilitate public awareness for trees planting on their own property. A Commemorative Tree program will be organized in Years 4 and 5 along with a brochure. Through this program, an opportunity will be created for citizens and groups to honor and remember individuals through the enhancement of public lands and streetscapes with tree plantings.

4. Tree Maintenance and Care of the City's forestry resources is presently provided through the Department of Buildings, Parks and Ground. Greater awareness community-wide will be facilitated through the communication network identified in Year 1. Further, in Years 2-5, information will be developed to concerning the value of trees, existing resource protections and the appropriate notification procedures for reporting violations specific to trees. Plans are anticipated to be developed in Years 2 and 3. These include the coordination of planting, care and management of the City tree resources utilizing the Department of Buildings, Parks and Grounds, the Community Forestry Working Group and the Business Improvement District, service clubs and other volunteer organizations and interested citizens.

Central to all four basic elements of the Plan are the education, outreach and continued training of City staff and volunteers. The City will continue to face challenges from environmental conditions and funding of the tree enhancement and protection programs. The Community Forestry Management Plan, as proposed, provides the framework to addresses these challenges. The environmental ethics and long-standing stewardship of the City and its residents is a critical strength; however, limited budgets and coastal resiliency planning efforts are anticipated to require that the City seek supplementary funds to aid in the implementation of the Plan, namely through CSIP grants.

10. Community Stewardship Incentive Program

In recognition that the CORE Training and continued education requirements will be met in Year 2 and in anticipation of the approval of the CFMP, the City anticipates that it will be eligible to apply for Community Stewardship Incentive Program (CSIP) grants helpful in implementing this Management Plan. The 15 CSIP practices are addressed below in terms of their location in the CFMP along with a brief summary of the goals and objectives relating to each practice. Implementation of specific CSIPs is dependent upon adequate funding.

CSIP #1 Training

Training is one of the foundation components of the CFMP update, as identified in Sections 2, C. "Goals and Objectives," pages 3 through 6. Training of the Community Forestry Working Group and City personnel is proposed to efficiently: (a) implement the CFMP through the review, adoption and integration of the Plan into City activities, policies and programs (Goal 1, A-D); (b) provide training to the Community Forestry Working Group (Goal 1, E); (c) develop and seek support to train City personnel in caring for municipal tree resources and in responding to inquiries or reports from the public concerning tree-related issues (Goal 4, A); (d) incorporate coordinating City tree planting, care and management in the CFMP in addition to a training component (Goal 3, C and Goal 6, B) and (e) expand training, both CORE and advanced training, for City personnel and volunteers (Goal 6, A).

The specific components of the Yearly Implementation Timeline (Section 9, B) include:

2016 – Tasks – 4, 13, 14

2017– Tasks – 19

2018 Tasks – 12

2019 – Tasks – 14

2020 – Tasks – 13

In summary, training will be accomplished in the City through the Tree Inventory and Assessment component of the Plan that will be conducted by a qualified consultant who will train the City personnel and volunteers regarding its importance and use. The Tree Hazard Identification and Management aspects of the Plan will be implemented through the above-mentioned training of City personnel and volunteers. The Tree Maintenance and Care component of the Plan will be accomplished through the training of the City personnel using established standards. The Tree Planting training portion of the Plan will include selection and

planting of trees and shrubs that are appropriate to the barrier island conditions and City tree planting goals. Finally, efforts will be made to engage more City personnel and volunteers to attend state-wide training programs to comply with the CFMP requirements.

CSIP #2 Community Forestry Ordinance Establishment

The City has established a base of municipal Ordinances for zoning and land use purposes, but has yet to develop ordinances specific to the management of its community tree and other natural resources. It is anticipated that through the development and implementation of this plan that the governing body may consider the need for such ordinances along with incorporating appropriate elements of the CFMP into the City Master Plan (Goal 4, E and Goal 5, B).

City Council adoption of the CFMP (Goal 1, Objectives A, B and C) in consultation with City Departments, programs and the public is a key element to establishing forestry policy in the municipality. Included in its approval is the authorization of the Community Forestry Working Group along with the Department of Buildings, Parks and Grounds to oversee the City's tree resources based upon review of the City organizational management for tree resources. The intent of the City is to utilize the immediately available institutions to aid in the implementation of the Plan. The City will evaluate the role of these groups and determine how their roles and responsibilities should be evolved over the life of the Plan.

The specific components of the Yearly Implementation Timeline Section 9, B include:

2016 – Tasks – 1, 2, 3, 4

2017 – Tasks – 2

2018 – Tasks – 1

2019 – Tasks – 1, 10, 12

2020 – Tasks – 2

In summary, the City proposes incorporation of appropriate components of the CFMP into their Ordinances and Master Plan. As such, the City will establish the regulatory, management and oversight framework to protect its tree resources.

CSIP #3 Public Education and Awareness

The education and outreach components are foundation elements of this Plan. Community education is incorporated within many of the Plan Goals and Objectives. The public will be

informed of the value of their tree resources and how the City intends to protect, preserve and enhance these resources. Through the Plan review and adoption, City officials, personnel and the public will be made aware of the City's tree resources and the provisions of the Plan (Goal 1, B and C and Goal 4, A, B and C).

Community events, programs at the school and volunteer activities will be utilized as opportunities to inform and educate the public of the Plan (Goal 4, A, B, C and Goal 6, C). Educational/outreach will be directed toward residents, visitors and professional landscapers working within the City (Goal 3, C, D) using the City website and communications (Goal 4, C) associated with activities such as the Commemorative Tree and Arbor Day programs. A guide to trees suitable for use in the coastal environment; and a guide for care and maintenance of trees will also be provided (Goal 3, C and Goal 6, B).

The specific components of the Yearly Implementation Timeline Section 9, B include:

2016 – Tasks – 7, 8, 9, 11

2017 – Tasks – 11, 12, 13, 14, 15, 16, 17

2018 – Tasks – 8, 9, 10, 13

2019 – Tasks – 8, 9, 11, 15, 16

2020 – Tasks – 9, 10, 11, 14, 15

In summary, the Public Education and Awareness Program provides insights and experiences concerning the value, protection and care of its trees to the residents and the large visitor population. A diversity of venues and materials, as well as various outreach channels, are included in the Plan.

CSIP #4 Arbor Day

Celebration of Arbor Day typically occurs within the City school. With the heightened awareness of tree resources and a renewed interest by the City with the CFMP and desire to pursue "Tree City USA" designation, it is anticipated that a variety of outreach and educational activities will be evaluated for expanding Arbor Day recognition as resources are available.

The specific component of the Yearly Implementation Timeline Section 9, B includes:

2016 – Tasks – 9

2017 – Tasks – 14, 15

2018 – Tasks – 8, 9, 13

2019 – Tasks – 8, 9, 15

2020 – Tasks – 9, 10, 14

In summary, the City will explore the utilization of the national focus on trees during the celebration of Arbor Day to provide a venue to consider tree value, protection and care. Associated with this effort will be the Commemorative Tree Planting and School Enrichment programs.

CSIP #5 Tree Inventory

The City has positioned itself to conduct a meaningful Tree Inventory. The principal focus of Goal 2 (A, B, C, D, E) is to inventory the community tree resources. A preliminary inventory of naturally occurring forests and park/streetscape tree resources clearly indicates the need for a tree inventory database system and a standardized mapping system.

The specific components of the Yearly Implementation Timeline Section 9, B include:

2016 – Tasks – 5, 6

2017 – Tasks – 4, 5, 6, 7, 9

2018 – Tasks – 2, 3, 4, 5

2019 – Tasks – 2, 3, 4, 5

2020 – Tasks – 3, 4, 5, 6, 17

The Tree Inventory is the critical component of the Plan to assess and manage the tree resources of the City. In order that the tree resources are accurately monitored and that a program/system is in place to identify the tree hazards and invasive species, to program tree maintenance and care, and to improve the tree planting plan, a database system and mapping is essential. The Plan incorporates the development of this system and mapping.

CSIP #6 Hazard Tree Assessment

The inventory database and mapping will aid in the tree hazard assessment that will be methodically conducted. The focus of this assessment is to identify hazardous trees occurring in close proximity to “targets” or areas of risk, in addition to invasive trees (Goal 2, A, B, C, D, E). In the interim, the organizational structure within the City, principally through the Office of the Mayor, in addition to the Community Forestry Working Group, will report hazardous tree conditions to the City Administrator and the Department of Buildings, Parks and Grounds (Goal 3, E, F). This Department will take corrective actions to address the hazardous tree conditions.

The specific components of the Yearly Implementation Timeline Section 9, B include:

2016 – Tasks – 12

2017 – Tasks – 4, 5, 9, 10

2018 – Tasks – 3, 6, 7

2019 – Tasks – 3, 6, 7

2020 – Tasks – 7, 8, 16

In summary, the City recognizes its responsibility of assessing hazardous trees or stands of trees and taking corrective actions in a timely manner by training City personnel. The organizational structure for reporting and addressing tree problems is an important part of the Plan – the existing process will be reviewed and revised as need. Further, the Public Lands Vegetation Management Plan provides prescribed practices and management techniques in concert with the CFMP.

CSIP #7 Storm Damage Assessment

The storm damages assessment is treated concurrently with CSIP# 5 and #6. The tree inventory provides the database and mapping to monitor the tree resources (Goal 2, A, B, C, D, E). The adoption of the Plan, including the City organizational structure and Community Forestry Working Group, has positioned the City to respond to storm damage. The inventory and assessments described above, as well as the City's desire to incorporate i-Tree Storm functionality, serve as proactive management approaches to pre-storm contingency planning (Goal 7, B, C). Because of the intensity of the coastal storms and exposure of the City, all City tree resources are at risk. The Department of Buildings, Parks and Grounds is experienced in addressing these challenges. The Plan provides the opportunity to evaluate the policies and procedures used by the City (Goal 1, E and Goal 4, A).

The specific components of the Yearly Implementation Timeline Section 9, B include:

2016 – Tasks – 5

2017 – Tasks – 4, 5

2018 – Tasks – 2

2019 – Tasks – 2

2020 – Tasks – 3, 16, 17

The City, exposed to severe coastal storms, has evolved a strategic approach to protecting the

community from storm damage to the maximum extent possible. The adoption and adequate implementation for funding of this Plan provides the City with the opportunity to factor trees into the storm damage assessment, especially in terms of the tree inventory, tree hazard identification and tree management and care.

CSIP #8 Tree Maintenance and Removals

Tree maintenance and removal is an important component of the Plan to project the need for additional City programs and services to routinely care for the trees in the community. As the streetscape and park trees are enhanced, the maintenance program will require evaluation and refinement. The development of this Plan will address these on-going needs (Goal 1, G; Goal 2, B, C, Goal 3, E, F, Goal 5, C, Goal 7, B).

The specific component of the Yearly Implementation Timeline Section 9, B includes:

2016 – Tasks – 7, 11

2017 – Tasks – 1, 3, 6, 8, 11, 18

2018 – Tasks – 1, 3, 6, 7, 11

2019 – Tasks – 1, 3, 6, 7, 13

2020 – Tasks – 1, 4, 7, 8, 12, 16

Recognizing the value of trees in the City, their maintenance and care is essential to protect this investment for the residents, visitors and inhabitants of this natural feature. The Tree Inventory and Assessment in the Plan provides the database system and maps to organize, prioritize and monitor the maintenance and care of the tree resources.

CSIP #9 Insect and Disease Management

To protect the tree resources in the Inventory, the City will initiate a program that entails the replacement of damaged and diseased trees with adapted species. The Community Forestry Working Group and Department of Buildings, Parks and Grounds are expected, through training and networking, to remain current regarding emerging tree insect and disease issues. The continued training and tree hazard assessment (Goal 1, E, Goal 2, B, C, D, Goal 4, A, C, Goal 6, A, B and Goal 7, D) will aid in early detection of pests and disease. Only properly trained and state-certified pesticide applicators will be contracted to control pests and disease.

The specific components of the Yearly Implementation Timeline Section 9, B include:

2016 – Tasks – 6, 7, 11, 12

2017 – Tasks – 1, 3, 4, 5, 9, 10, 11, 12, 13

2018 – Tasks – 3, 5, 6, 7, 8, 12

2019 – Tasks – 3, 6, 7, 8, 14

2020 – Tasks – 4, 7, 8, 9, 13, 16

It is recognized that the City must be proactive in addressing insects and diseases that impact the community's tree resources by focusing attention on tree inventory and hazardous tree assessment along with the need for additional training.

CSIP #10 Wildfire Protection

The City recognizes the potential risks associated with wildfire in its public open spaces containing concentration of woody vegetation; however, these areas are limited in North Wildwood. Proactively, the City has established a Public Lands Vegetation Management Plan to address ecological integrity of the barrier island due to invasive species, public safety considerations and management practices for public lands stewardship. Wildfires can result from an accidental occurrence, such as a discarded cigarette or naturally from lightning. In either case, the fire, fueled by excessive tinder often associated with invasive species or dead/dying vegetation, can spread to and destroy the forest ecosystem, other sensitive habitats and residences or obscure visibility. The Department of Buildings, Parks and Grounds will respond to these issues in coordination with the Police and Emergency Management Departments.

The specific components of the Yearly Implementation Timeline Section 9, B include:

2016 – Tasks – 1, 4, 6, 12

2017 – Tasks – 1, 3, 4, 5, 9, 12, 13

2018 – Tasks – 1, 3, 6, 12

2019 – Tasks – 1, 3, 6, 14

2020 – Tasks – 1, 4, 7, 13, 16

The presence of combustible material with the stands of woody vegetation and high exposure to anthropogenic sources of fire warrants continuing efforts to address wildfire fire issues. An assessment by the City's Emergency Management staff will determine whether it is warranted to consult with the N. J. Forest Fire Service for wildfire planning, preparedness, emergency operation and rehabilitation.

CSIP #11 Tree Planting

The planting of trees in the City has been almost as important as preserving the natural stands of trees and planted streetscapes. The City has continued to enhance the tree resources of the community through its planting efforts. The number of trees in the streetscapes focuses attention on the need to plant appropriate trees in the community. The Plan strategies to encourage the community to supplement the community forest with an emphasis on the use of native species (Goal 3, C, Goal 4, A, C, and Goal 6, B).

The specific components of the Yearly Implementation Timeline Section 9, B include:

2016 – Tasks – 5, 6, 7, 9, 15

2017 – Tasks – 1, 6, 7, 8, 10, 14

2018 – Tasks – 1, 4, 5, 7, 8

2019 – Tasks – 1, 4, 5, 7, 8

2020 – Tasks – 1, 5, 6, 8, 9

Tree planting is another foundation element to enhancing the tree resources of the City. The Tree Inventory and Assessment is important to the tree planting component of the Plan because it focuses limited resources on where and which trees should be planted. The environment, which can be severe and droughty, necessitates careful plant selection. A list of recommended plants (trees, shrubs and herbaceous plants) should be incorporated in City Ordinances (Goal 1, H, Goal 3, C and Goal 6, B). The City will need to allocate resources and engage community support to enhance the streetscapes to expand the benefits of trees to the City.

CSIP #12 Tree Recycling

The tree resources of the City, at present, have not warranted a tree recycling program. The City will continue to utilize the Cape May County Municipal Utilities Authority's program to recycle trees to mulch. As such, no components of the Plan focus specifically on recycling at this time. The priority during this planning period is to establish strong tree resources in the City.

CSIP #13 Sidewalk Maintenance Program

The sidewalks require regular inspection and maintenance to ensure safe pedestrian access through the City. Sidewalk inspections shall be included in tree inventory efforts (Goal 2, A, C) utilizing criteria to be established (e.g. sidewalk heaving and breaking, overhanging trees and trees growing into power lines, etc).

The specific components of the Yearly Implementation Timeline Section 9, B include:

2016 – Tasks – 6, 12

2017 – Tasks – 7, 8

2018 – Tasks – 3

2019 – Tasks – 3

2020 – Tasks – 3, 16

These Plan criteria will be developed early in the Plan implementation process, funding available.

CSIP #14 Storm Water Management

The storm water associated with inundation in the City is primarily a result of astronomical high tides and storms. Flooding storm water under these conditions generally has a high salinity only diluted by precipitation. After significant storm events, an inventory of trees in public areas will be conducted (Goal 2, B and Goal 7, B, C) focusing not only on tree damage, but also on the impact of excessive salt loading in the soils on tree health.

CSIP #15 Other

None.

11. Selected References

Bingmaps. Aerial Imagery courtesy of the USGS. 2010.

City of North Wildwood. Ordinances Chapter 246 including amendments

City of North Wildwood. Recreation and Open Space Inventory. 1999. City of North Wildwood, NJ

City of North Wildwood. Master Plan Re-Examination. 2005. Birdsall Engineering. City of North Wildwood, NJ

City of North Wildwood. Municipal Budget. 2013. City of North Wildwood, NJ

State of New Jersey. 1996. New Jersey Shade Tree and Forestry Assistance Act (P.L. 1996, Chapter 135). Trenton, NJ.

State of New Jersey. 2009. New Jersey Community Forestry Program. Department of Environmental Protection, Division of Forest and Parks. Trenton, NJ.

State of New Jersey. 2013. Department of Environmental Protection, Office of GIS Aerial Imagery. Trenton, NJ.

State of New Jersey. Geographic Information Network, Trenton, NJ.

United States Census Bureau. 2010. Census Data for City of North Wildwood, NJ

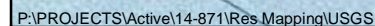
United States Department of Interior, Geological Survey. 1998. Topographic Quad Maps (Seaside Park Quad 111). Washington D.C.

www.newjerseyshore.com. 2012. Historical information for the City of North Wildwood. Cape May County, NJ

APPENDIX A

Figures

- Figure 1:** City of North Wildwood USGS Topographic Map
Figure 2: City of North Wildwood Aerial with Land Cover Overlay



DRAWN BY:
ACB

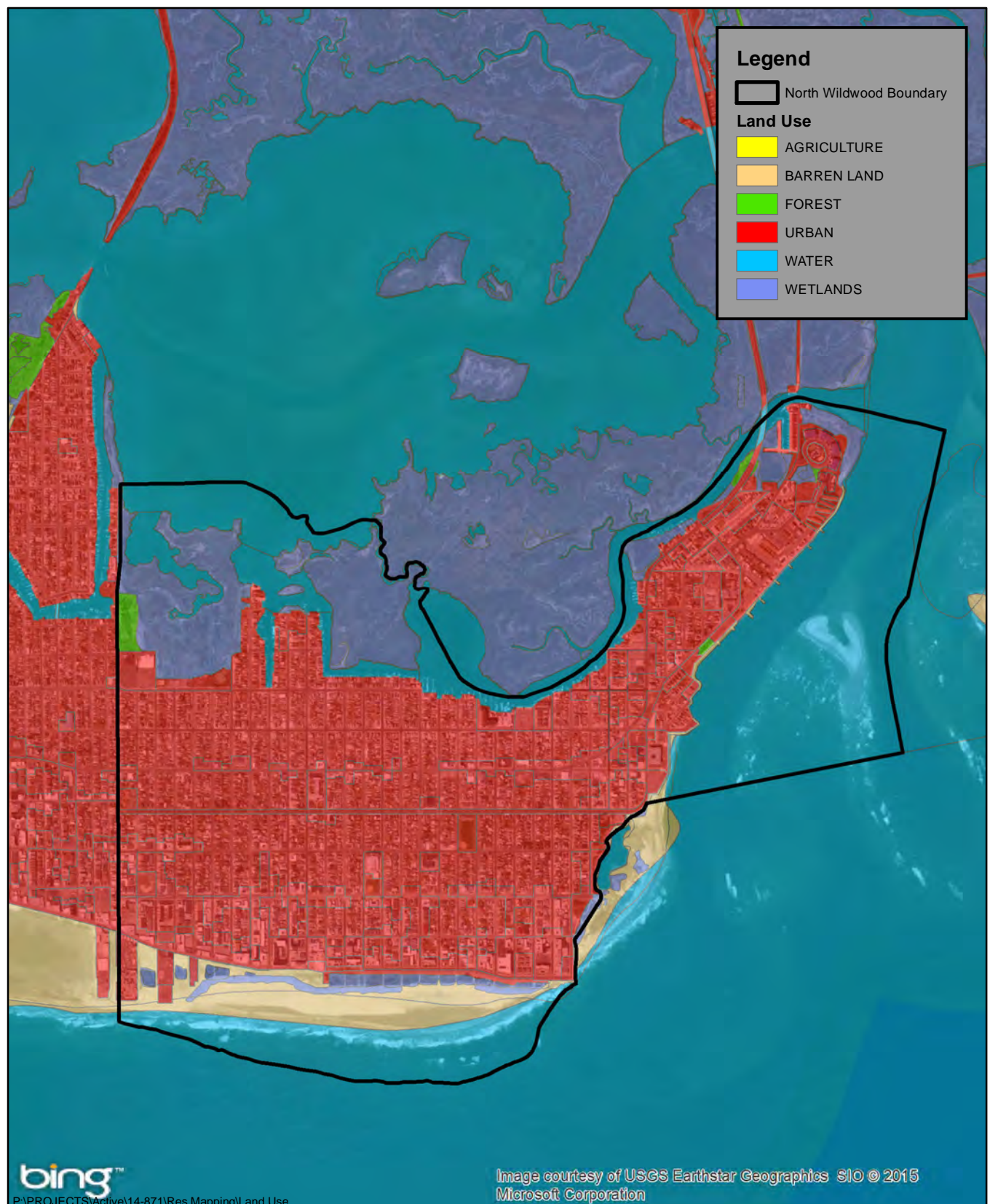


FIGURE 2: BING MAPS AERIAL OVERVIEW
OF NORTH WILDWOOD
WITH LAND COVER OVERLAY

SOURCE: GIS DATA PROVIDED BY THE NJDEP
AT <http://njgin.nj.gov/> & THE CAPE MAY
COUNTY PLANNING DEPARTMENT



DATE:
7-28-15

DRAWN BY:
ACB

1 inch = 2,000 feet



APPENDIX B

**City of North Wildwood - Forestry Base Map
with Preliminary Street Tree Inventory
and Naturally Vegetated Areas Overlay,
Community Forestry Management Plan”,
prepared by The Lomax Consulting Group,
dated 12/17/15**



Legend

- City of North Wildwood Boundary
- Street Tree Locations
- Naturally Vegetated Areas

bing

Image courtesy of USGS Earthstar Geographics. GIS © 2010 Microsoft Corporation © 2010 NAVTEQ © AIG

SCALE: 1 inch = 500 feet

0 250 500 1,000 Feet

SOURCES:
BingMaps Aerial Photograph
NJ Office of Info Technology
TLCG Site Investigations



CITY OF NORTH WILDWOOD
FORESTRY BASE MAP: PRELIMINARY STREET TREE INVENTORY
AND NATURALLY VEGETATED AREAS
COMMUNITY FORESTRY MANAGEMENT PLAN
CITY OF NORTH WILDWOOD, CAPE MAY COUNTY, NEW JERSEY

DRAWN BY:	DATE:
ACB	12-17-15
CHECKED BY:	REVISED:
PLL	
PROJECT #:	
14-871	

